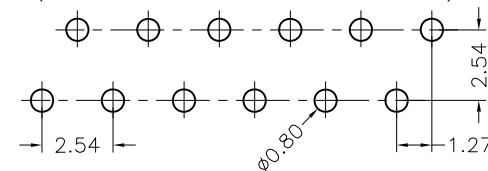




Recommended P.C.B Layout(Top Side)
(PCB BOARD TOLERANCE±0.05)



PART NUMBER CODING

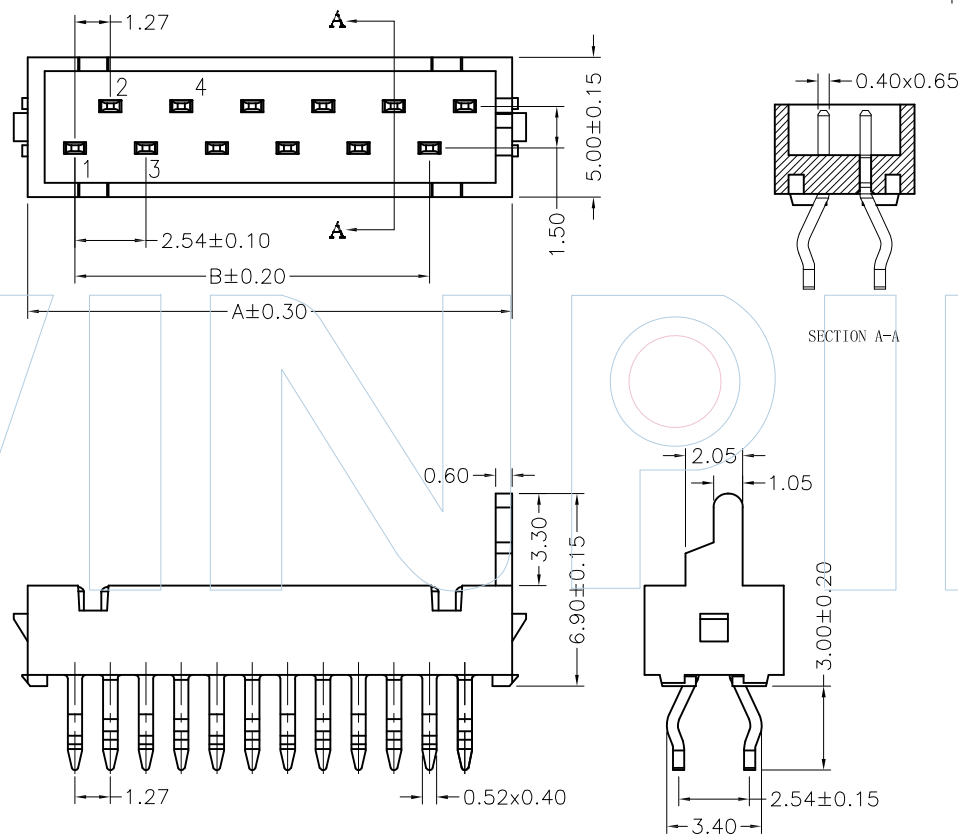
MMMS-XX XX X X 1

No. of Pins
4-26

Contact Plating
G0:Gold Flash
G1:3U*Gold
G2:5U*Gold
G3:10U*Gold
G4:15U*Gold
G5:20U*Gold
G6:30U*Gold
S0:Gold Flash/Tin
S1:3U*Gold/Tin
S2:5U*Gold/Tin
S3:10U*Gold/Tin
S4:15U*Gold/Tin
S5:20U*Gold/Tin
S6:30U*Gold/Tin
SN:Tin

Material
A=PBT
C=PA6T
E=PA46

Packing
T=Tube



Circuit	Part No.	Dimension		Q'TY /Tube
		A	B	
04	MMMS-04XXXX1	7.20	2.54	71pcs
06	MMMS-06XXXX1	9.74	5.08	54pcs
08	MMMS-08XXXX1	12.28	7.62	44pcs
10	MMMS-10XXXX1	14.82	10.16	37pcs
12	MMMS-12XXXX1	17.63	12.70	31pcs
14	MMMS-14XXXX1	19.90	15.24	28pcs
16	MMMS-16XXXX1	22.44	17.78	25pcs
18	MMMS-18XXXX1	24.98	20.32	22pcs
20	MMMS-20XXXX1	27.52	22.86	20pcs
22	MMMS-22XXXX1	30.06	25.40	17pcs
24	MMMS-24XXXX1	32.60	27.94	14pcs
26	MMMS-26XXXX1	35.14	30.48	11pcs



Tel:+86 769 82581808 FAX:+86 769 81766192
E-Mail:winpin@win-pin.com Http:www.win-pin.com

PART NO: MMMS-XXXXXX1

TITLE: Micro Match Box Header 180° DIP

NOTES:
Current Rating: .1.0AMP
Withstand Voltage:500V AC/DC
Contact Resistance:20mΩ Max
Insulation Resistance:1000MΩ Min
Operation Temperature:-25°C to +85°C

Contact Material:Phosphor Bronze
Contact Plating:Sn over Ni
Insulator Material:High Temperature plastic (UL94V-0)

UNLESS OTHERWISE SPECIFIED DIMENSIONS ARE IN METRIC TOLERANCES ARE:
DECIMALS Angle
X.X:±0.40 ± 3°
X.XX:±0.25
X.XXX:±0.15

SCALE 1:1
UNIT MM
PROJ.
SHEET

A0	2015/06/25	NEW	Hua.ZT		Hua.ZT
REV	DATE	MODIFICATION DESCRIPTIO	DRAW	CHANGE	APPROVE