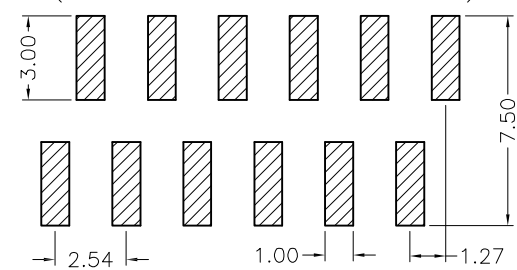




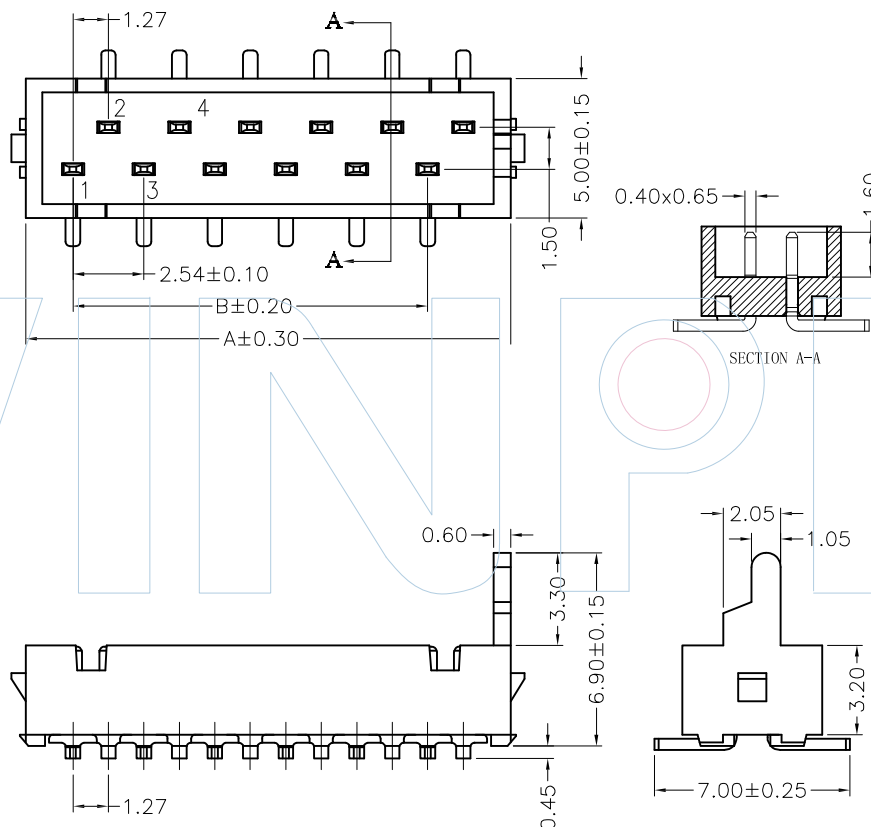
Recommended P.C.B Layout(Top Side)
(PCB BOARD TOLERANCE±0.05)



PART NUMBER CODING

MMMM-XX XX X X 1

- No. of Pins: 4-26
- Contact Plating:
 - G0:Gold Flash
 - G1:3U*Gold
 - G2:5U*Gold
 - G3:10U*Gold
 - G4:15U*Gold
 - G5:20U*Gold
 - G6:30U*Gold
 - S0:Gold Flash/Tin
 - S1:3U*Gold/Tin
 - S2:5U*Gold/Tin
 - S3:10U*Gold/Tin
 - S4:15U*Gold/Tin
 - S5:20U*Gold/Tin
 - S6:30U*Gold/Tin
 - SN:Tin
- Material:
 - A=PBT
 - C=PA6T
 - E=PA46
- Packing:
 - T=Tube



Circuit	Part No.	Dimension		Q'TY /Tube
		A	B	
04	MMMM-04XXXX1	7.20	2.54	71pcs
06	MMMM-06XXXX1	9.74	5.08	54pcs
08	MMMM-08XXXX1	12.28	7.62	44pcs
10	MMMM-10XXXX1	14.82	10.16	37pcs
12	MMMM-12XXXX1	17.63	12.70	31pcs
14	MMMM-14XXXX1	19.90	15.24	28pcs
16	MMMM-16XXXX1	22.44	17.78	25pcs
18	MMMM-18XXXX1	24.98	20.32	22pcs
20	MMMM-20XXXX1	27.52	22.86	20pcs
22	MMMM-22XXXX1	30.06	25.40	17pcs
24	MMMM-24XXXX1	32.60	27.94	14pcs
26	MMMM-26XXXX1	35.14	30.48	11pcs



Tel:+86 769 82581808 FAX:+86 769 81766192
E-Mail:winpin@win-pin.com Http:www.win-pin.com

NOTES:
Current Rating: 1.0AMP
Withstand Voltage:500V AC/DC
Contact Resistance:20mΩ Max
Insulation Resistance:1000MΩ Min
Operation Temperature:-25°C to +85°C

Contact Material:Phosphor Bronze
Contact Plating:Sn over Ni
Insulator Material:High Temperature plastic (UL94V-0)

UNLESS OTHERWISE SPECIFIED DIMENSIONS ARE IN METRIC TOLERANCES ARE:
DECIMALS Angle
X.X:±0.40 ± 3°
X.XX:±0.25
X.XXX:±0.15

PART NO: MMMM-XXXXXX1

TITLE: Micro Match Box Header SMT

SCALE 1:1
UNIT MM
PROJ.
SHEET

A0	2015/06/25	NEW	Hua.ZT		Hua.ZT
REV	DATE	MODIFICATION DESCRIPTIO	DRAW	CHANGE	APPROVE