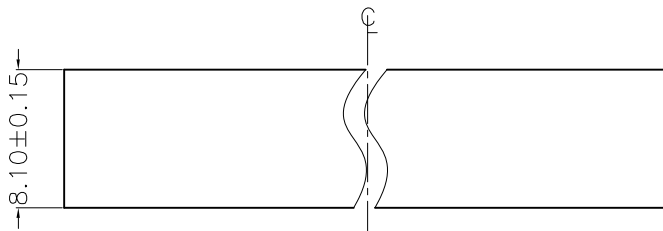
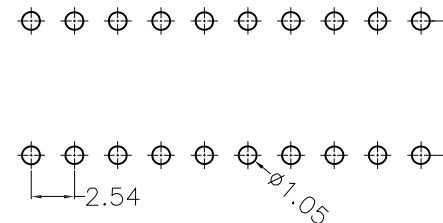




Recommended P.C.B Layout(TOP Side)  
(PCB BOARD TOLERANCE±0.05)



PART NUMBER CODING

FHFR59-2 XX XX X U X 1

No.of Pins  
Row:02-40Pin

Contact Plating

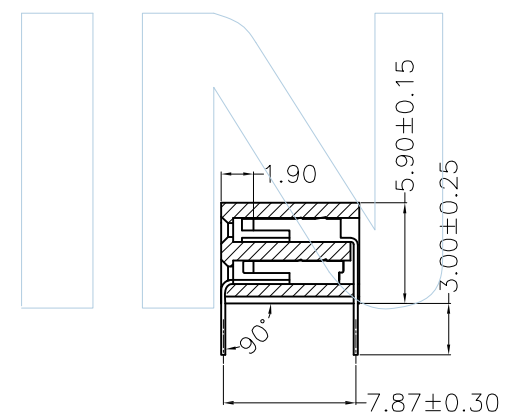
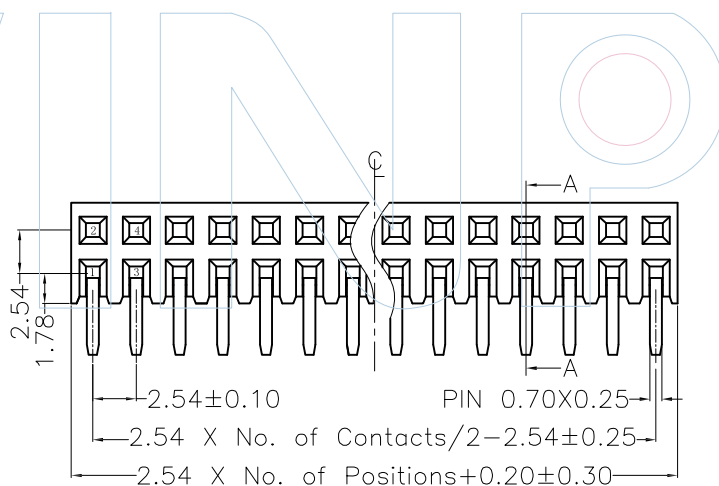
Insulator  
Material/Colour

Packing  
T=Tube+Cap  
R=Tape&Reel+Cap

- G0:Gold Flash
- G1:3U\*Gold
- G2:5U\*Gold
- G3:10U\*Gold
- G4:15U\*Gold
- G5:20U\*Gold
- G6:30U\*Gold
- S0:Gold Flash/Tin
- S1:3U\*Gold/Tin
- S2:5U\*Gold/Tin
- S3:10U\*Gold/Tin
- S4:15U\*Gold/Tin
- S5:20U\*Gold/Tin
- S6:30U\*Gold/Tin
- SN:Tin

- C:PA6T/Black
- D:LCP/BLACK

- T=Tube+Cap
- R=Tape&Reel+Cap



SECTION: A-A



Tel:+86 769 82581808 FAX:+86 769 81766192  
E-Mail:winpin@win-pin.com Http:www.win-pin.com

PART NO: FHFR59-2XXXXXUX1

TITLE: FH2.54mm Dual Row Female H=5.9mm 90°

NOTES:  
Current Rating:3.0AMP  
Contact Resistance:20mΩ Max  
Insulation Resistance:1000MΩ Min  
Withstand Voltage:500V AC/Minute  
Operation Temperature:-55°C to +125°C

Contact Material:Phosphor Bronze  
Contact Plating:Au over Ni  
Insulator Material:Polyester (UL94V-0)  
Standard:PA6T Or LCP+30%GF Black

UNLESS OTHERWISE SPECIFIED DIMENSIONS ARE IN METRIC TOLERANCES ARE:  
DECIMALS Angle  
X.X:±0.40 ± 3°  
X.XX:±0.25  
X.XXX:±0.15

SCALE	1:1
UNIT	MM
PROJ.	
SHEET	

A0	2015/06/25	NEW	Hua.ZT		Hua.ZT
REV	DATE	MODIFICATION DESCRIPTIO	DRAW	CHANGE	APPROVE